



Old Friend

by April Klich

Whether you choose to knit it short and fitted or long and slouchy, this cabled hat is sure to become an old friend that's always by your side.

This knitting pattern is available under the [value-for-value model](#). If you like it, you can buy me a [Ko-Fi](#), sign up for the [With Wool Express newsletter](#), or show your friends. Thank you for your support!

Sizes

Baby/Toddler (16"-18") [41 - 46 cm]

Child (18" - 20") [46 - 51 cm]

Adult S/M (20" - 22") [51 - 56 cm]

Adult L (22" - 24") [56 - 61 cm]

Gauge

4 sts and 6 rows = 1"

Materials & Notions

For Fitted Hat

60 (85, 120, 140) yds / 55 (78, 104, 119) m
worsted weight yarn (wool or superwash
wool)

Shown in Knit Picks Swish Worsted - *Allspice*,
and Stonehedge Fiber Mill Shepherd's Wool
Worsted - *Garnet*

For Slouchy Hat

70 (100, 140, 172) yds / 64 (91, 128, 157) m
worsted weight yarn (wool or superwash
wool)

Shown in Knit Picks Swish Worsted - *Dove
Heather*

US 7 (4.5 mm) 32" circular needles **OR** 16"
circular needle/DPNs **OR** size needed to
obtain gauge

Tapestry needle

Regular and locking stitch markers (Optional)

Abbreviations + Chart Legend



k = knit



p = purl



k2tog = knit 2 stitches together



ssk = slip 1 st knit-wise, slip 2nd st
purl-wise, insert the left needle into
the front of both sts and knit together



p2tog = purl 2 stitches together



p3tog = purl 3 stitches together



sl wyib = slip stitch with yarn held in
back; work at the beginning of the
round only



2CF = slip 2 sts to a cable needle and hold
to the front; knit 2 sts from the left needle;
then knit the 2 sts on the cable needle

st(s) = stitch(es)

DPN = double pointed needles



Helpful Notes

Fitted vs Slouchy

Which hat should you make? If you want a snug hat without a lot of extra bulk, go for the fitted hat. The ribbing is just long enough to cover the wearer's ears so it would be great for an extra bit of warmth under a helmet or hood.

The slouchy hat has more ribbing and a longer cable section. If you want a hat with room to grow for a kid, pick the slouchy hat. The longer ribbing can be folded over for warmth over ears or worn unfolded for a slouchy look.

About stitch markers:

Stitch markers can make this project easy autopilot knitting. Here's the two ways I used markers to help myself:

- Separated each repeat with markers to keep track of where I was in the stitch pattern.
- Placed a locking stitch marker on the first row of a new repeat to make it simple to count rows. No more guessing which row to cross the cables.

Cabling Without A Cable Needle:

If you've never worked cables without a cable needle, this hat is a perfect opportunity to try. Here's a [tutorial](#) to learn how and speed up your cable knitting.



For The Fitted Hat

Cast on 56 (70, 84, 98) sts with the long tail cast-on and join to knit in the round.

Work 1x1 rib - k1, p1 - for 2 (2, 3, 3) 5 (5, 7.6, 7.6) cm.

Begin cable stitch pattern using either the charts or written instructions, and work 4 (5, 6, 7) times per round. Repeat 3 (4, 5, 5) times. End on Round 6.

Repeat Tracker

Baby + Toddler	1	2	3		
Child	1	2	3	4	
Adult S/M/L	1	2	3	4	5

Cable Stitch Pattern

14	13	12	11	10	9	8	7	6	5	4	3	2	1	
•	•	△	△	△	△	•	•			•	•			6
•	•					•	•			•	•			5
•	•					•	•			•	•			4
•	•					•	•			•	•			3
•	•					•	•			•	•			2
•	•					•	•			•	•			1
14	13	12	11	10	9	8	7	6	5	4	3	2	1	

Rounds 1-5: *k2, p2, k2, p2, k4, p2*, repeat section between * * (14 sts)

Round 6: *k2, p2, k2, p2, 2CF, p2*

For The Slouchy Hat

Cast on 56 (70, 84, 98) sts with the long tail cast-on and join to knit in the round.

Work 1x1 rib - k1, p1 - for 3 (3, 4, 4) 7.6 (7.6, 10, 10) cm.

Begin the cable stitch pattern using either the charts or written instructions, and work 4 (5, 6, 7) times per round. Repeat 4 (5, 6, 6) times. End on Round 6.

Repeat Tracker

Baby + Toddler	1	2	3	4		
Child	1	2	3	4	5	
Adult S/M/L	1	2	3	4	5	6



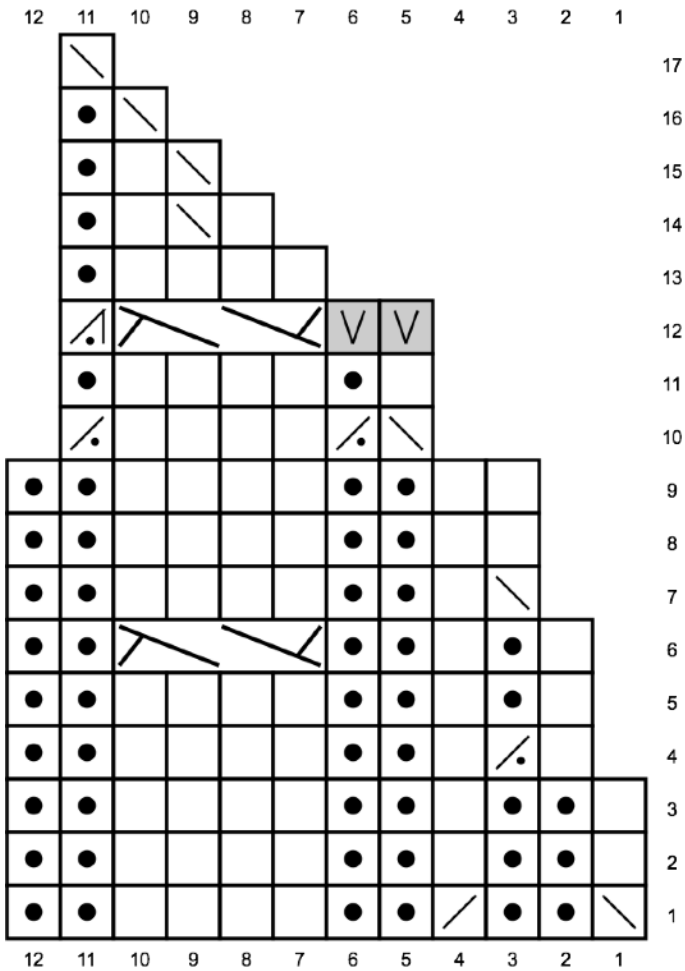
For Both The Fitted and Slouchy Hats

Working from either the chart or written instructions, begin the crown decreases. Work 4 (5, 6, 7) times per round.

If working on a 16" circular needle, switch to DPN's when circumference is too small to comfortably work on circulars.

After working Round 17, cut yarn and draw through remaining sts with the tapestry needle. Weave in ends and block.

Crown Chart



Written Instructions

Round 1: *ssk, p2, k2tog, p2, k4, p2* (12 sts)

Rounds 2-3: *k1, p2, k1, p2, k4, p2*

Round 4: *k1, p2tog, k1, p2, k4, p2* (11 sts)

Round 5: *k1, p1, k1, p2, k4, p2*

Round 6: *k1, p1, k1, p2, 2CF, p2*

Round 7: *ssk, k1, p2, k4, p2* (10 sts)

Rounds 8-9: *k2, p2, k4, p2*

Round 10: *ssk, p2tog, k4, p2tog* (7 sts)

Round 11: *k1, p1, k4, p1*

Note: If using stitch markers to separate the repeats, remove or shift them as you work the p3tog on Round 12

Round 12: Slip first and second sts of Round 12 from the left to the right needle. They are now at the end of the round. *2CF, p3tog* (5 sts)

Round 13: *k4, p1*

Round 14: *k1, ssk, k1, p1* (4 sts)

Round 15: *ssk, k1, p1* (3 sts)

Round 16: *ssk, p1* (2 sts)

Round 17: *ssk* (1 st)





Contact

Have a question or need help?
Send me a message.

april@withwool.com
www.withwool.com/old-friend

And you can find me, @AprilKlich, on
[Instagram](#), and [Ravelry](#).

I love seeing your WIP's and FO's so please
tag me and use #withwoolknits Happy
knitting!

Copyright

All photos, diagrams, and the knitted design of this pattern are subject to copyright. Do not distribute this pattern digitally or in hardcopy. The pattern may be used only for personal, non-commercial uses, unless express written permission from the designer has been received. The patterns may not be used for commercial production without permission.

Want to knit something for a charity benefit or take a commission from a friend? No problem.